



St. Stephen's Catholic Primary School  
Goathland Avenue  
Newcastle-Upon-Tyne  
Tyne and Wear  
NE12 8FA  
T: 0191 6250900  
E: [office@ststephensrc.org.uk](mailto:office@ststephensrc.org.uk)  
W: [www.ststephensprimaryschool.co.uk](http://www.ststephensprimaryschool.co.uk)  
T: @ststephensrc

**Friday 12<sup>th</sup> January 2024**

Dear Parents and Carers,

### School Photography

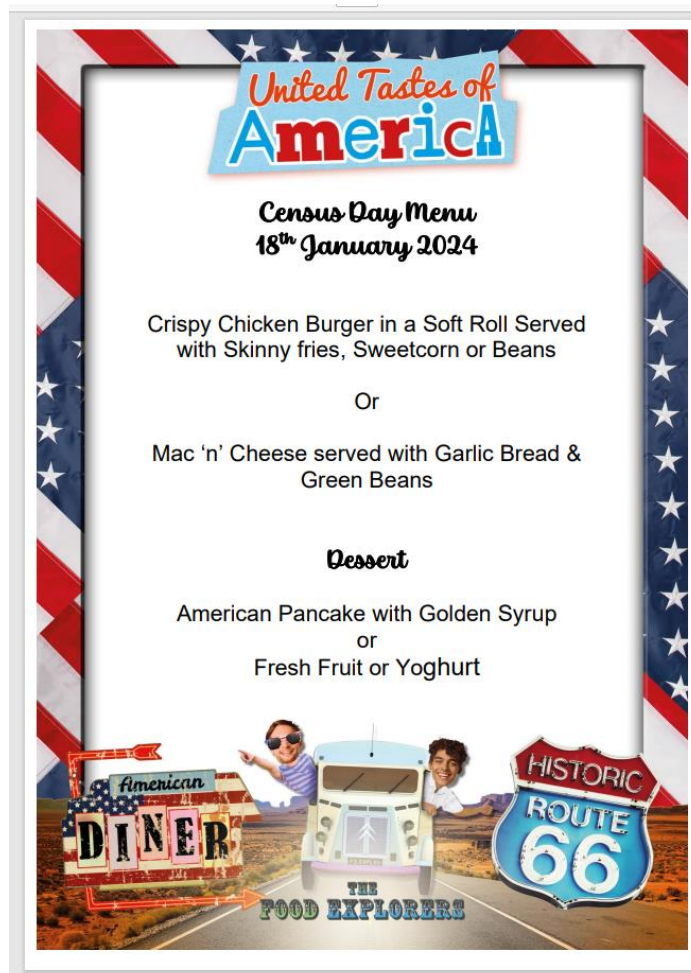
Our school photographers will be visiting on Monday 29<sup>th</sup> January. Family shots and photographs of pupils with siblings who don't attend our school will take place between 8am and 8.45am, should you be interested. Individual pupil photographs and photographs of siblings within school will be taken in school hours throughout the day. Please can we ask that you do not attend before school for photographs that can be taken in school hours.

### Rosebrough Dental Practice

We have been informed that Rosebrough Dental practice we have limited spaces for NHS children. It is our understanding that a lot of people are struggling at this time to find a dentist. You can contact them on 01912662095 or email at [info@rosebroughdentalpractice.co.uk](mailto:info@rosebroughdentalpractice.co.uk).

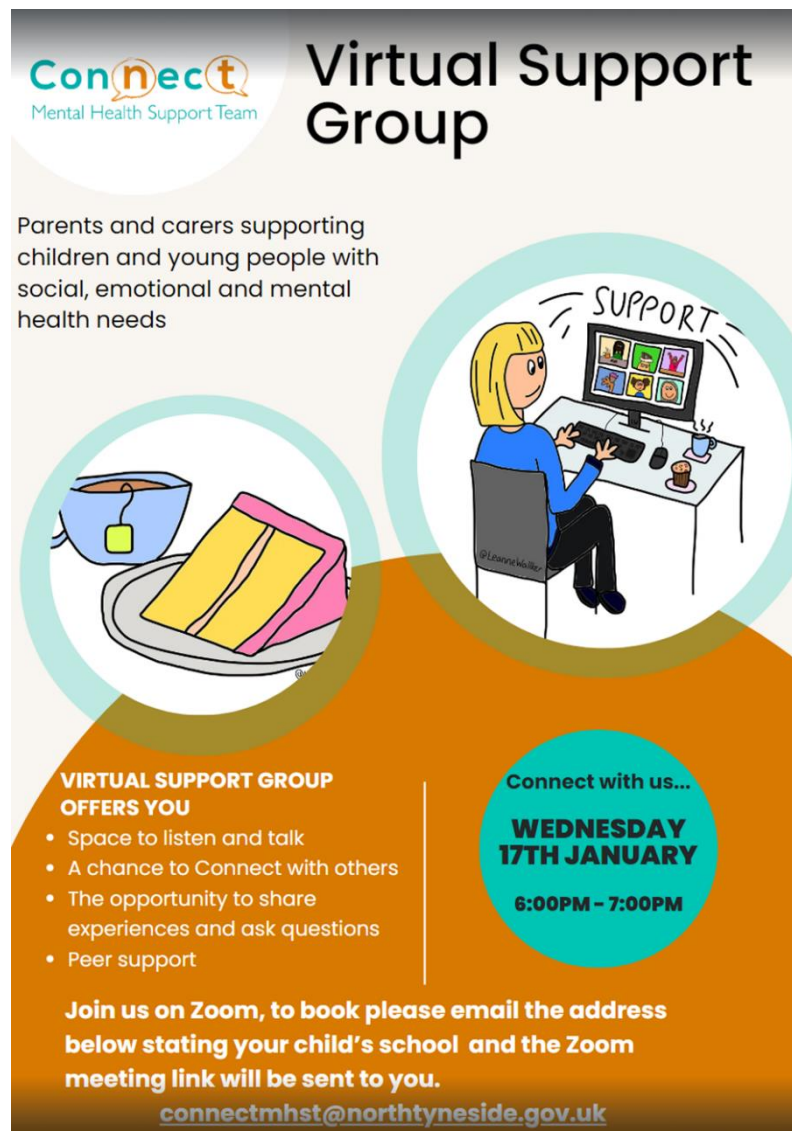
### United Tastes of America School Lunch

Our school catering team are planning a special America themed lunch on **Thursday 18<sup>th</sup> January**. School lunch is free to pupils in Reception, Year 1 and Year 2 as well as those entitled to free school meals. The revised menu has been sent out and is below - this will be updated on Appetite shortly so that orders can be placed.



## Virtual Support Group

We would like to share with you details of a Virtual Support Group that is being held on **Wednesday 17<sup>th</sup> January 6pm-7pm**, ran by the Mental Health Support Team. To book, please email [connectmhst@northtyneside.gov.uk](mailto:connectmhst@northtyneside.gov.uk), stating your child's school, and the Zoom meeting will be sent to you.



The poster features the 'Connect Mental Health Support Team' logo at the top left. The main title 'Virtual Support Group' is in large, bold letters. Below the title, it states 'Parents and carers supporting children and young people with social, emotional and mental health needs'. There are two circular illustrations: one showing a cup of tea and a sandwich, and another showing a person sitting at a desk with a computer monitor displaying a Zoom meeting grid, with the word 'SUPPORT' written above the monitor. The bottom section is orange and contains the following text:

**VIRTUAL SUPPORT GROUP OFFERS YOU**

- Space to listen and talk
- A chance to Connect with others
- The opportunity to share experiences and ask questions
- Peer support

**Join us on Zoom, to book please email the address below stating your child's school and the Zoom meeting link will be sent to you.**

[connectmhst@northtyneside.gov.uk](mailto:connectmhst@northtyneside.gov.uk)

**Connect with us...  
WEDNESDAY  
17TH JANUARY  
6:00PM - 7:00PM**

### **Dates for the Diary (as always, dates are subject to change!):**

- Each Tuesday, 9<sup>th</sup> January – 13<sup>th</sup> February - Year 6 Ski Lessons (Group 1)
- Wednesday 24<sup>th</sup> January 9.15am – Height and Weight Measurements for Reception and Year 6
- Thursday 25<sup>th</sup> January – Year 6 Workshop at St Paul's, Alnwick
- Friday 26<sup>th</sup> January – Holocaust Memorial Day
- Monday 29<sup>th</sup> January – School Photography Day
- Tuesday 30<sup>th</sup> January – Girls Football at NUcastle
- Tuesday 6<sup>th</sup> February 9am – Nursery Stay and Play
- Tuesday 6<sup>th</sup> February 3.30pm – Online Safety Parent Workshop
- Wednesday 7<sup>th</sup> February 9am – Reception Stay and Play
- Friday 16<sup>th</sup> February – Last day of half term
- Monday 19<sup>th</sup> February – Friday 23<sup>rd</sup> February – School Closed for Half Term
- Each Tuesday, 27<sup>th</sup> February – 26<sup>th</sup> March - Year 6 Ski Lessons (Group 2)